



Agriculture, Environmental and Animal Care T Level (AEAC)

National T Level Conference

26th June 2024

Introductions

Jackie Hough



Industry Manager - Land

Sarah Cocks



Technical Advisor - Land

Alison Whittle



Technical Advisor – Post-16

Agriculture, Environment & Animal Care T Level

10 mins

Introduction

25 mins

Update from City & Guilds: Sarah Cocks

25 mins

T Level feedback and top tips

10 mins

Comfort Break

20 mins

Discussion

15 mins

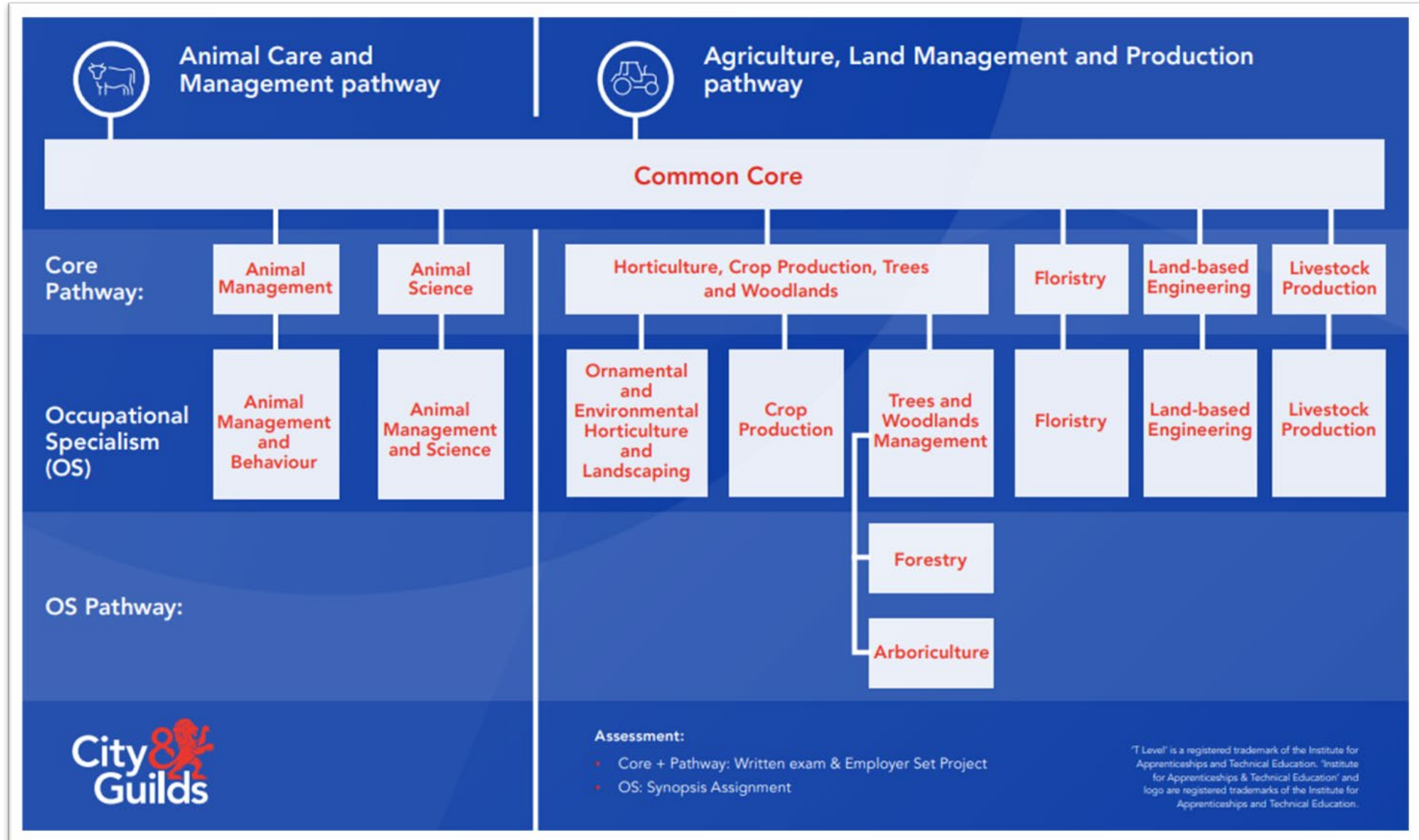
Discussion

15 mins

Plenary and Close



Structure of the AEAC Technical Qualification



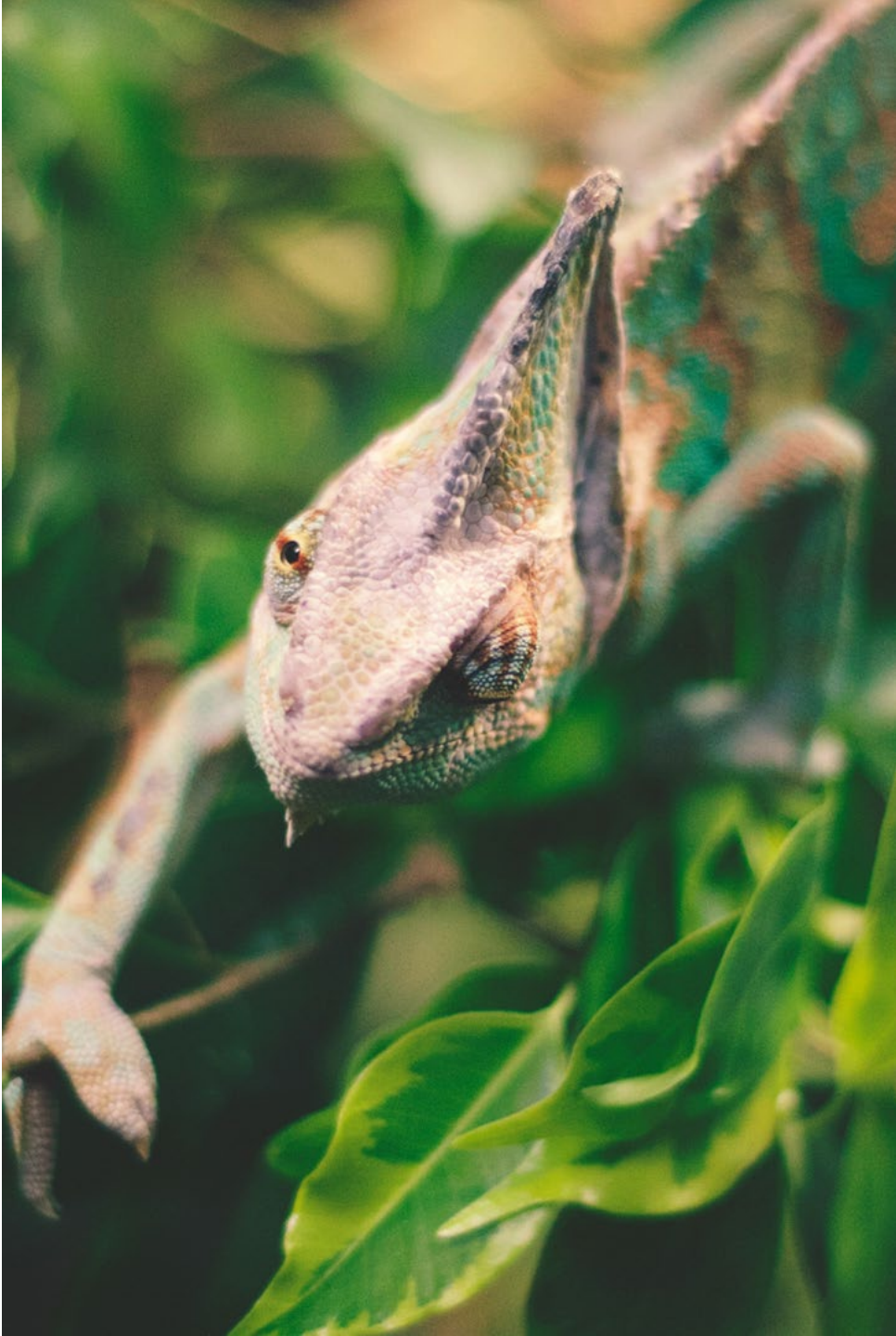


Agriculture, Land Management & Production Update

- ALMP started delivery in September 2023:
 - 7 centres delivering Livestock Production,
 - 3 centres delivering Crop Production and
 - 2 centres delivering Land Based Engineering.
- Increased number of centres expected to start delivery from September 2024.
- Guide Standard Exemplar Materials (GSEMs) have recently been updated and published on the website.
- IFATE and C&G are working together to incorporate pig skills into the Livestock OS for cohorts commencing September 2024.

Feedback from this year –

- Positive feedback received from both delivery staff and learners;
- Improved engagement, attendance and retention from learners;
- Increased employer engagement.



Animal Care & Management Update

- The Animal Care & Management pathway has been approved and published, with delivery starting in September 2024.
- The specification, sample assessment materials and key dates schedule are available on the website.
- Guide Standard Exemplar Materials (GSEMs) will be available soon.
- A number of successful pre-delivery networking events have already taken place.
- C&G are working with HEIs to identify progression onto relevant degree level course from both occupational specialisms.

Resources

- Dedicated qualification page: [Agriculture, Environment and Animal Care - T Levels | City & Guilds \(cityandguilds.com\)](https://www.cityandguilds.com/qualifications/t-levels/18717)
- Free Tutor Resources for the Common Core units including SOW, ppts, worksheets and MCQ for formative assessments
- Editable curriculum planners
- Sample assessments
 - Sample theory exam papers and mark schemes
 - Sample ESP and marking grids
 - Sample OS assignment and guide standard exemplar materials
- Guidance on evidence uploading, assessment processes

[Resource Hub](#)
[Provider page](#)

Agriculture, Environment and Animal Care



Tutor resources

Some of these resources have been updated in order to include examples from the animal care sector. The affected resources have 'v2' at the end of the file names (21 March 2024).

(1) [Health and safety](#) (ZIP) (Updated 21 March 2024)

(2) [Sustainability](#) (ZIP) (Updated 21 March 2024)

(3) [Working in the agriculture, environmental and animal care sector](#) (ZIP) (Updated 21 March 2024)

(4) [Ethics](#) (ZIP)

(5) [Business](#) (ZIP) (Updated 21 March 2024)

(6) [Equality](#) (ZIP) (Updated 21 March 2024)

(7) [Communication](#) (ZIP) (Updated 21 March 2024)

(8) [Relationship management](#) (ZIP) (Updated 21 March 2024)

(9) [Finance](#) (ZIP) (Updated 21 March 2024)

(10) [Information and data](#) (ZIP) (Updated 21 March 2024)

[Home](#) > [Qualifications](#) > [Land Based Services](#) > [Agriculture](#) > T Level Agriculture, Environmental and Animal Care (8717)

T Level Agriculture, Environmental and Animal Care (8717)

INFORMATION DOCUMENTS

T-LEVELS | Institute for Apprenticeships & Technical Education

TQ Employer-Set Project Assessment process guide
Version 1.6, 2023

City & Guilds

Preparing for Delivery

- Range of online and face to face events to support centres with planning for delivery.
- All events will be published on the T Levels Events & Webinars page: [Events and webinars - T Levels | City & Guilds \(cityandguilds.com\)](https://www.cityandguilds.com/en/education/t-levels/events-and-webinars)
- You can also sign up to our T Level newsletter to get up to date information about events: [T Levels for Providers - T Levels | City & Guilds \(cityandguilds.com\)](https://www.cityandguilds.com/en/education/t-levels/newsletter)

[Home](#) > [T Levels](#) > Events and webinars

Events and webinars

T-LEVELS
THE NEXT LEVEL QUALIFICATION

We run free webinars and events throughout the year to ensure our customers are supported at every stage, from curriculum planning through to ongoing delivery.

Our events provide a great opportunity to network with your peers, and gain expert advice and guidance from our technical advisors and their teams.

You will also find the recordings and slides from each of our T Level webinars, as well as our communications.

Please be aware that some of our events listed below are hosted on Eventbrite and Go to Webinar and will link you to their website for registration.

	Onsite Construction and Building Services Engineering	▼
	Engineering and Manufacturing	▼
	Management and Administration	▼
	Agriculture, Environment and Animal Care	▼



Questions?



Linsey Douce Bishop Burton College

BISHOP BURTON

College

T-LEVELS

Agriculture
Crops & Livestock



Growing potential for
sustainable futures

What has gone well...

- Training for staff from ETF and C&G – staff felt well prepared even though the Specification was finalised very late!
- Industry Placement – Employers investment in providing quality placement.
- Employer events – Business Breakfast held at the college to provide the employers with the knowledge needed to support student progress.
- Placement Supported the development of industry skills using unfamiliar machinery as well meeting/working with new people
- Planning and Delivery – using 4 hour block for Occupational Specialism – maintain interest as well as enabling practical's to be meaningful
- The structure of the qualification allows for holistic teaching methods, this supports students understanding of



What has gone well continued

- ESP – Mock ESP carried out in January – develop student confidence in delivering presentation. Supported staff in preparation for the real thing.
- Resources available on the “Hub” for staff use and adapt for the Common Core
- Student feedback – enjoying the structure of the course, following their specialism supports motivation



What are the challenges and changes for next year...

- Size of the ESP – much bigger than first thought
- Staffing ESP assessment whilst other Agri courses were still on timetable.
- CC, CP and OS have some common content e.g Health & Safety, Sustainability and Communication. Over planned this year, will amend for next year.
- H&S and Sustainability - over done in theory setting, will have more practical aspects to the delivery to maintain interest and focus
- Having completed the first year, we know there is time to fit in more guest speakers and offsite visits to enhance experience
- ESP Crop – very heavily a biosecurity project and student feedback is they were disappointed as it was quite a dull task. However the livestock student had a more interesting project.



BISHOP BURTON
College

Thank you for
listening

T-LEVELS



Growing potential for
sustainable futures



Claire Gibson: Northumberland College

Positives

- Holistic delivery, with lots of opportunity to connect with industry via external visits, guest speakers and masterclasses
- Involvement of college support teams e.g. careers team and skills development coach team
- Support from C&G, including centre visits, training sessions, and online resources
- C&G resources for common core were very useful as a starting point to adapt for our learners/context

Challenges

- ESP assessment window clashed with external lambing placement opportunities for learners
- Familiarisation with a lot of new guidance meant we sometimes missed things which often caused delays, for example requirement for learners to be standing during recorded ESP presentations (identified by C&G Quality Team after submission of evidence); ESP file naming convention (most learners got this wrong so staff had to check/amend every file name before uploading); ESP video files can only be uploaded in MP4 format (staff used college ipads to record then each video file had to be converted afterwards)
- Requirement for dairy skills experience and assessment for current cohort in year means we have to take them to an external provider (and also pay for their time)
- Student retention (we started with 11 and are ending year 1 with 8 – 2 went to apprenticeships and 1 went to full-time employment – as they find four days at college too much)



Charlie Reeves: Reaseheath College

General feedback: Agriculture and Land based Engineering

- The common core was harder to deliver and get students to engage. Drew upon other college departments to support on specialist content
- Ag: Next year we are looking to use a model farm as a case study to make it more relatable and less dry.
- The ESP was big and required a lot of planning. The admin amount is huge too. Students need a lot of support to prepare them for it and what is needed. Definitely recommend uploading task by task. Dealing with larger numbers and cohorts was difficult due to the amount of time each student needed and fitting it in within the deadline.
- Also recommend breaking the timings of the tasks as much as possible as students struggled to concentrate and focus for longer periods of time.
- Ag: We are looking at bringing in the OS more into the 1st year to again engage the students more.
- Ag Eng: Deliver 402 from Easter of yr 1 to ensure content covered in preparation for synoptics
- We are increasing the practical element next year to make it less classroom based. Ag Eng: Deliver 50/50 practical to theory ratio
- The Dept has changed the way the course is advertised and students recruited so that they are aware that it is a more academic course.

Factors for Success:

Employer engagement and sourcing work placements as soon as possible

Industry body talks had a real impact on students and encouraged professional memberships to broaden the students reach/network

Technical Education Networks: Gatsby Education Sarah Herdan

[Technical Education Networks \(vimeo.com\)](#)

[Home - Technical Education Networks](#)

Questions?

